



Introduction

Challenges



Migrating from non-exchange environments and file share to O365



Migrating from email archive applications to O365 or O365 archive



Migration downtime and business continuity



Manual migration of the outlook profile and mapping old PST files



Cross tenant/forest migration complications

What is **SYNKER**

Migration Suite



Migrate from legacy email systems to O365 or perform cross tenant/forest migration



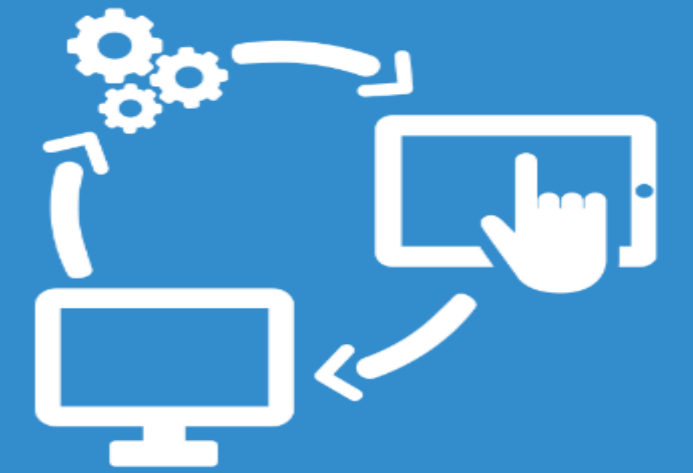
Migrate from legacy e-mail archives, SharePoint, file share to Online O365



Automated migration for end-users' data including Email and Windows Profiles.



Pre-stage data migration with full stop/resume support with real-time reporting



Export data from Online cloud services to PST files located On-premise or Cloud storage

Why **SYNKER**



No downtime

- Synker will allow replicating the source email server to the destination server and put them in full sync before you start the end-users migration
- Synker can sync a specific period of time (e.g. Last month emails)
- Synker will allow stop/resume during the server replication, so you can decide the best time slots to do the copy and avoid network throttles



Full server side migration automation

- Synker needs a simple CSV file that includes a source and destination e-mail address mapping and an account with Admin privilege, then Synker will do the job



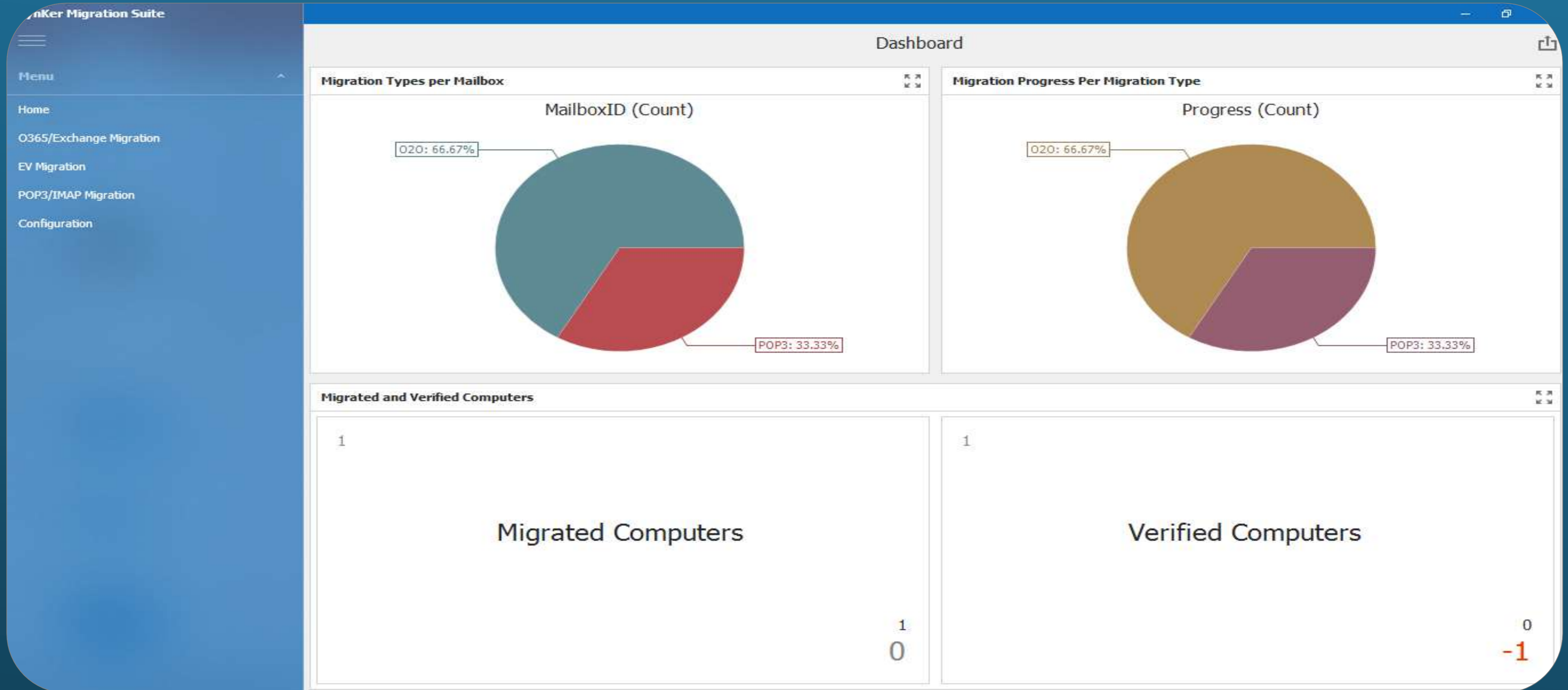
Full client side migration automation

- You will no longer need to pass by every user to migrate his outlook profile to the new server, Synker will copy the old profile and will also scan the old PST files , get their locations, and automatically add them to the newly created outlook profile with the same old names, so the user will be migrated almost seamlessly
- Synker will automatically force the End-User validation and will report the feedback to service desk



Key Features

Migration Tracking



Full Exchange Support

Synker Migration Suite

Menu

Home

0365/Exchange Migration

EV Migration

POP3/IMAP Migration

Configuration

Exchange Server Version:	Exchange 2010 SP2
Exchange Server FQDN:	Office 365
Source Service Account:	Exchange 2010 SP1
Source Service Account Password:	Exchange 2010 SP2
EML Storage Path:	Exchange 2013
Delete Email After Migration ?!:	Exchange 2013 SP1
Server Type:	No
POP3/IMAP Server Address:	POP3
Synchronization Interval	s
No. Of Process:	10 Minutes
Tools Share Path:	2
RMQ Server IP or FQDN:	E:\Downloads
RMQ UserName:	192.168.32.221
RMQ Password:	user
Confirm RMQ Password:	••••

Browse

Settings Control

synKer Migration Suite

Menu

- Home
- 0365/Exchange Migration
- EV Migration
- POP3/IMAP Migration
- Configuration

Destination Service Account:

Destination Service Account Password:

Source Server:

Destination Server:

Operation:

Import C

- Regular Move
- Sync Calendar
- Sync Contacts
- Export PST

Drag a column header here to group by

POP3

POP3/IMAP Server Address:

Synchronization Interval:

No. Of Process:

Tools Share Path:

RMQ Server IP or FQDN:

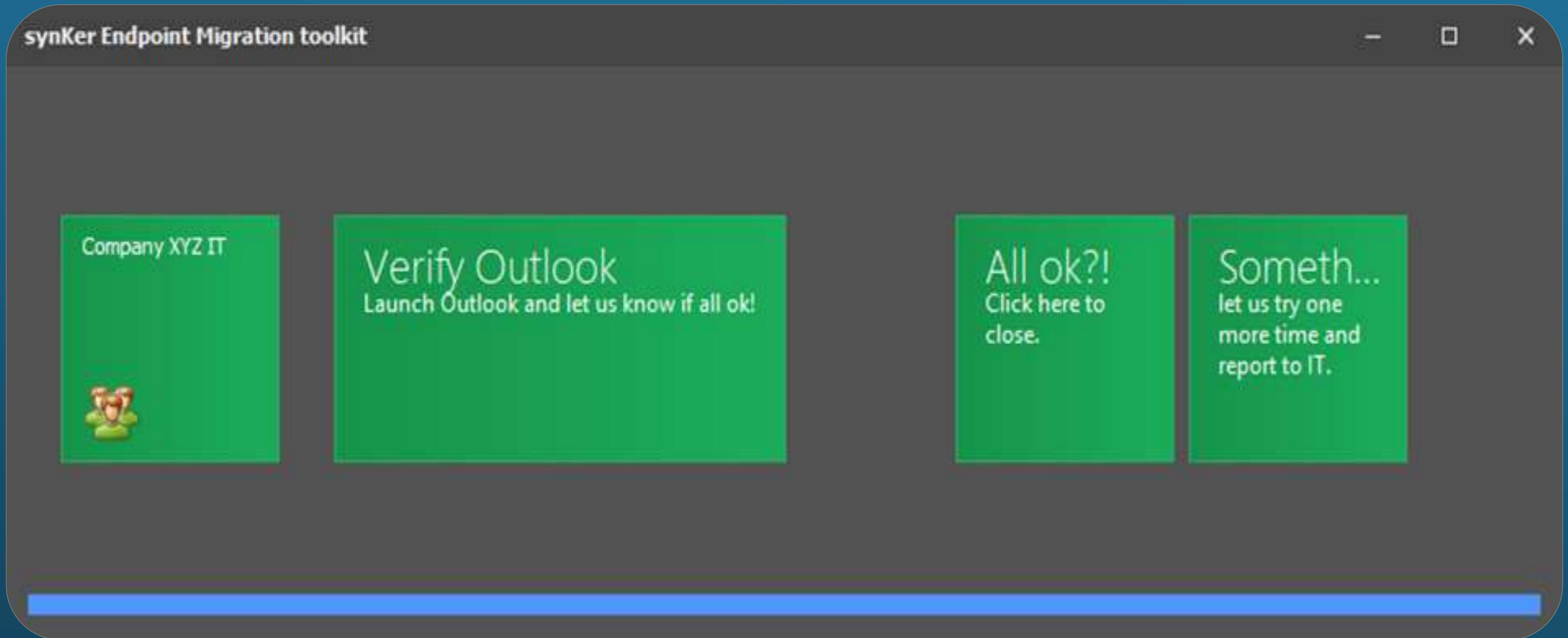
RMQ UserName:

RMQ Password:

Confirm RMQ Password:

12

End-users profile migration plugin



SysGravity

CONTACT US



sales@sysgravity.com



www.sysgravity.com